

Garment Measurements

| | XS | S | M | L | XL | 2XL | 3XL | 4XL | 5XL | | |
|-------------------------|----|----|----|----|----|-----|-----|-----|-----|--|--|
| A Length Front | | 77 | 78 | 79 | 80 | 81 | 82 | | | | |
| B Length Back | | 77 | 78 | 79 | 80 | 81 | 82 | | | | |
| C ½ Chest Width | | 54 | 56 | 58 | 60 | 62 | 64 | | | | |
| D ½ Bottom Width | | 57 | 59 | 61 | 63 | 65 | 67 | | | | |
| E Sleeve Length | | 78 | 79 | 81 | 82 | 83 | 85 | | | | |

How to measure:

Garment measurements are specified in Centimeters

Make sure the garment is flat and straight and avoid pulling in the garment when measuring.

A - Length Front:

Measure from the highest point on the shoulder, straight down to the bottom of the garment.

B - Length Back:

Measure from the highest point on the shoulder, straight down to the bottom of the garment.

C - ½ Chest Width:

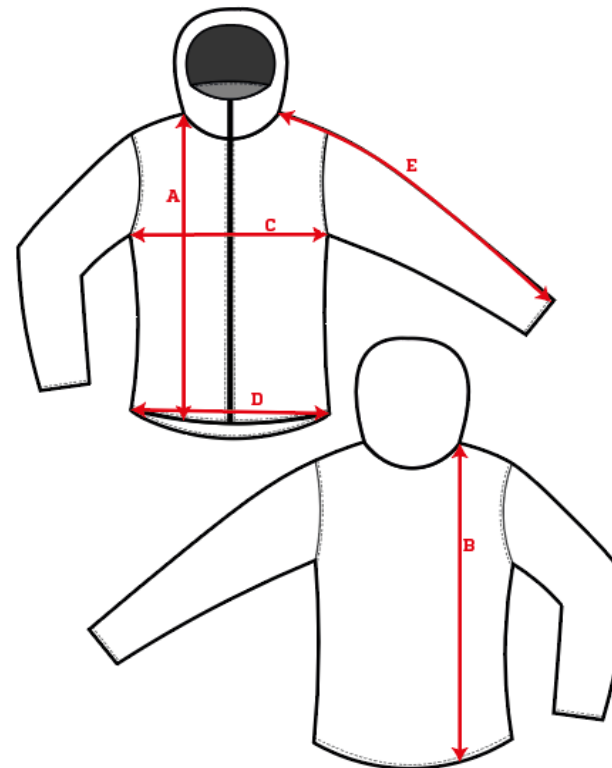
Measure straight across the chest from armpit to armpit.

D - ½ Bottom Width:

Measure straight across the bottom of the garment from edge to edge.

E - Sleeve Length:

Measure from the highest point on the shoulder, and follow the shape of the sleeve down to the opening of sleeve.



[See size guide here](#)