

Garment Measurements

	46	48	50	52	54	56	58	60	62	64	66
A ½ Waist	41	43	45	47	49,5	52	55	58			
B ½ Seat	50	52	54	57	60	63	66	68			
C ½ Thigh	29	30	32	34	36	38	40	41			
D Inseam Length	85	86	87	88	89	90	90	90			
E ½ Leg Opening	20	20	20	20	21	21	21	21			

How to measure:

Garment measurements are specified in Centimeters

Make sure the garment is flat and straight and avoid pulling in the garment when measuring.

A - ½ Waist:

Measure from the highest point of the waistband, straight across to the other side. Edge to edge.

B - ½ Seat:

Measure 20 cm down from the lower waistband. From that point, straight over to the other side.

C - ½ Thigh:

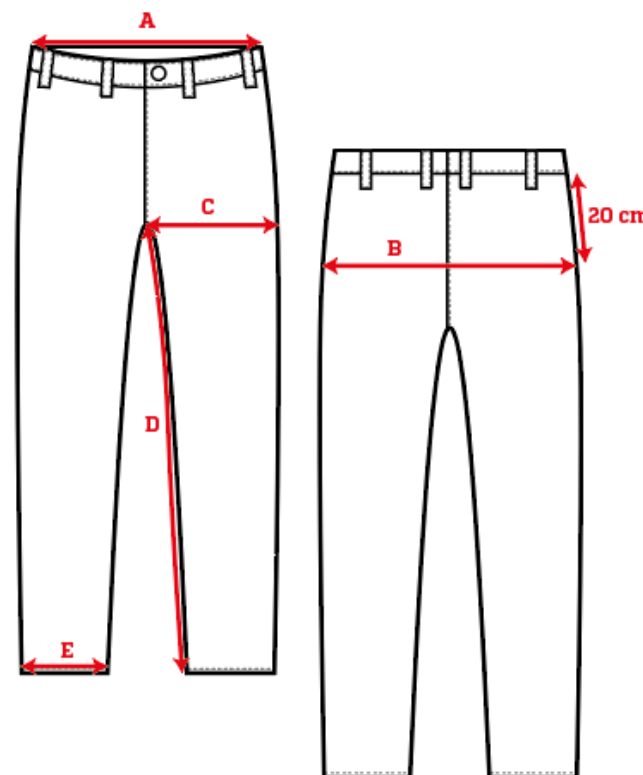
Measure straight across the thigh from the crotch seam to the edge of the outer leg.

D - Inseam Length:

Measure from the crotch seam and follow the inner leg down to the opening.

E - ½ Leg Opening:

Measure straight across the opening, edge to edge.



[See size guide here](#)