

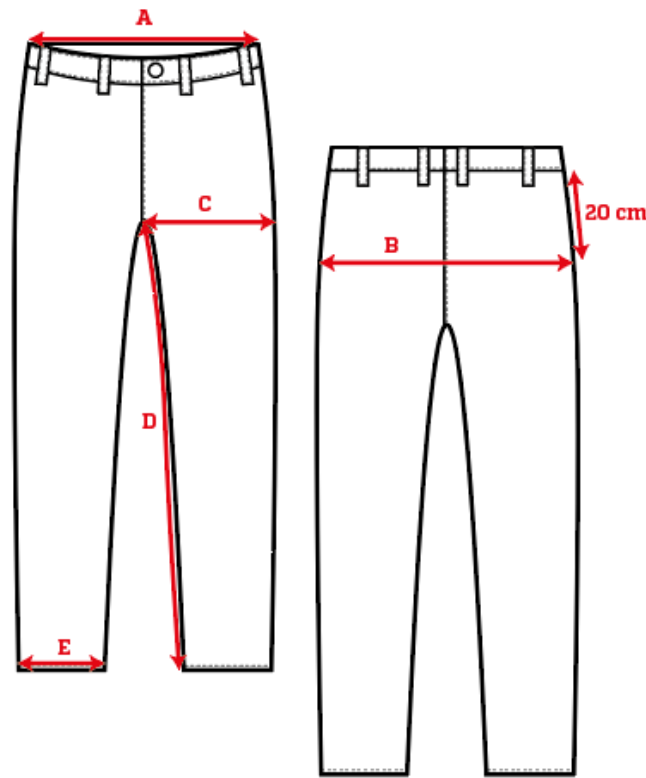
# Garment Measurements

		46	48	50	52	54	56	58	60	62	64	66
A	½ Waist	41	43	45	47	50	52	55	58			
B	½ Seat	49	51	53	55	57	59	61	63			
C	½ Thigh	33	34	35	36	37	38	39	40			
D	Inseam Length	72	73	74	75	76	77	77	77			
E	½ Leg Opening	19	19	19	19	20	20	20	20			

**How to measure:**

*Garment measurements are specified in Centimeters*

- Make sure the garment is flat and straight and avoid pulling in the garment when measuring.
- A - ½ Waist:**  
Measure from the highest point of the waistband, straight across to the other side. Edge to edge.
- B - ½ Seat:**  
Measure 20 cm down from the lower waistband. From that point, straight over to the other side.
- C - ½ Thigh:**  
Measure straight across the thigh from the crotch seam to the edge of the outer leg.
- D - Inseam Length:**  
Measure from the crotch seam and follow the inner leg down to the opening.
- E - ½ Leg Opening:**  
Measure straight across the opening, edge to edge.



[See size guide here](#)