

Garment Measurements

	148	150	152	154	156						
A ½ Waist		45	47	50	52						
B ½ Seat		53	55	57	59						
C ½ Thigh		35	36	37	38						
D Inseam Length		79	80	81	82						
E ½ Leg Opening		19	19	20	20						

How to measure:

Garment measurements are specified in Centimeters

Make sure the garment is flat and straight and avoid pulling in the garment when measuring.

A - ½ Waist:

Measure from the highest point of the waistband, straight across to the other side. Edge to edge.

B - ½ Seat:

Measure 20 cm down from the lower waistband. From that point, straight over to the other side.

C - ½ Thigh:

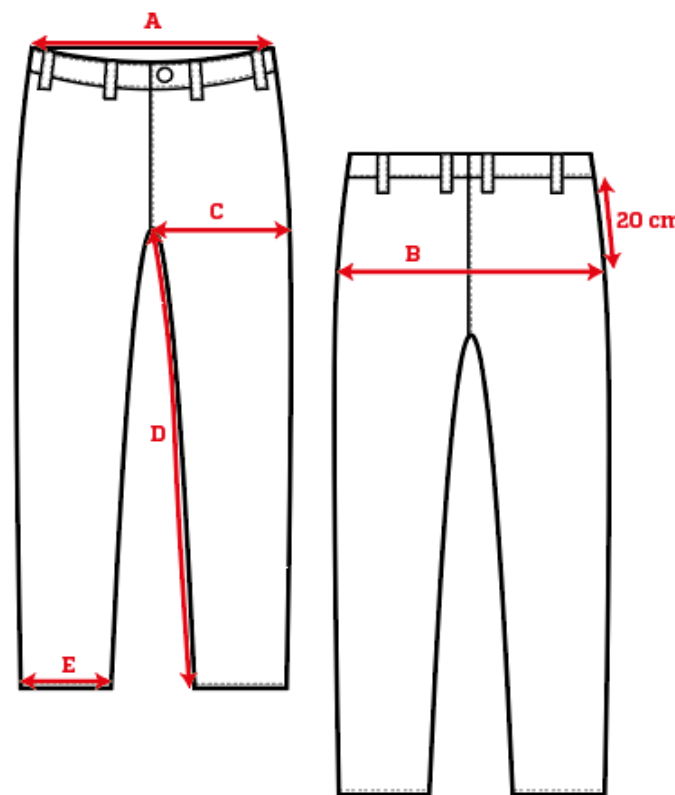
Measure straight across the thigh from the crotch seam to the edge of the outer leg.

D - Inseam Length:

Measure from the crotch seam and follow the inner leg down to the opening.

E - ½ Leg Opening:

Measure straight across the opening, edge to edge.



[See size guide here](#)