

Garment Measurements

		D96	D100	D104	D108	D112	D116	D120	D124			
A	½ Waist	46	48	50	52	55	57	60	63			
B	½ Seat	51	53	55	57	59	61	63	65			
C	½ Thigh	34	35	36	37	38	39	40	41			
D	Inseam Length	69	70	71	72	73	74	74	74			
E	½ Leg Opening	19	19	19	19	20	20	20	20			

How to measure:

Garment measurements are specified in Centimeters

Make sure the garment is flat and straight and avoid pulling in the garment when measuring.

- A - ½ Waist:

Measure from the highest point of the waistband, straight across to the other side. Edge to edge.
- B - ½ Seat:

Measure 20 cm down from the lower waistband. From that point, straight over to the other side.

C - ½ Thigh:

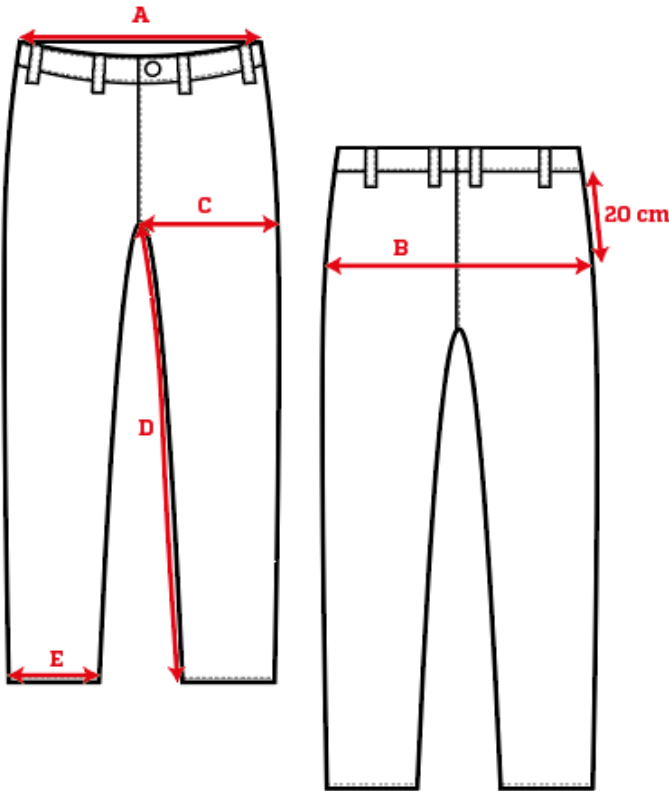
Measure straight across the thigh from the crotch seam to the edge of the outer leg.

D - Inseam Length:

Measure from the crotch seam and follow the inner leg down to the opening.

E - ½ Leg Opening:

Measure straight across the opening, edge to edge.



[See size guide here](#)