

Garment Measurements

	46	48	50	52	54	56	58	60	62	64	66
A ½ Waist	41	43	45	47	49,5	52	55	58			
B ½ Seat	49	51	53	56	59	62	65	67			
C ½ Thigh	28	29	31	33	35	37	39	40			
D Inseam Length	82	83	84	85	86	87	87	87			
E ½ Leg Opening	21	21	21	21	22	22	22	22			

How to measure:

Garment measurements are specified in Centimeters

Make sure the garment is flat and straight and avoid pulling in the garment when measuring.

A - ½ Waist:

Measure from the highest point of the waistband, straight across to the other side. Edge to edge.

B - ½ Seat:

Measure 20 cm down from the lower waistband. From that point, straight over to the other side.

C - ½ Thigh:

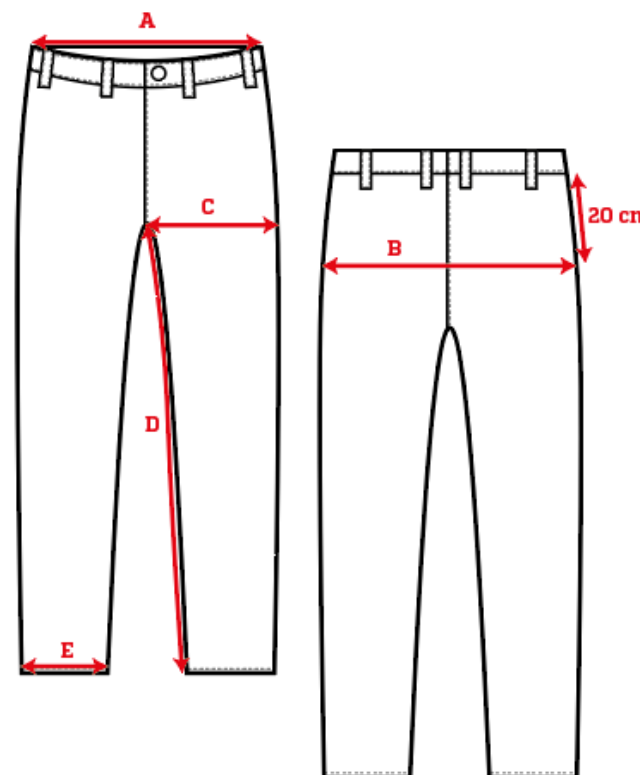
Measure straight across the thigh from the crotch seam to the edge of the outer leg.

D - Inseam Length:

Measure from the crotch seam and follow the inner leg down to the opening.

E - ½ Leg Opening:

Measure straight across the opening, edge to edge.



[See size guide here](#)