

Garment Measurements

	120	130	140	150	160	170					
A ½ Waist	26	28	30	32	34	36					
B ½ Seat	38	40	42	44	46	48					
C ½ Thigh	24	25	26	27	28	29					
D Inseam Length	51	57	63	69	75	79					
E ½ Leg Opening	17	18	18	19	19	19					

How to measure:

Garment measurements are specified in Centimeters

Make sure the garment is flat and straight and avoid pulling in the garment when measuring.

A - ½ Waist:

Measure from the highest point of the waistband, straight across to the other side. Edge to edge.

B - ½ Seat:

Measure 20 cm down from the lower waistband. From that point, straight over to the other side.

C - ½ Thigh:

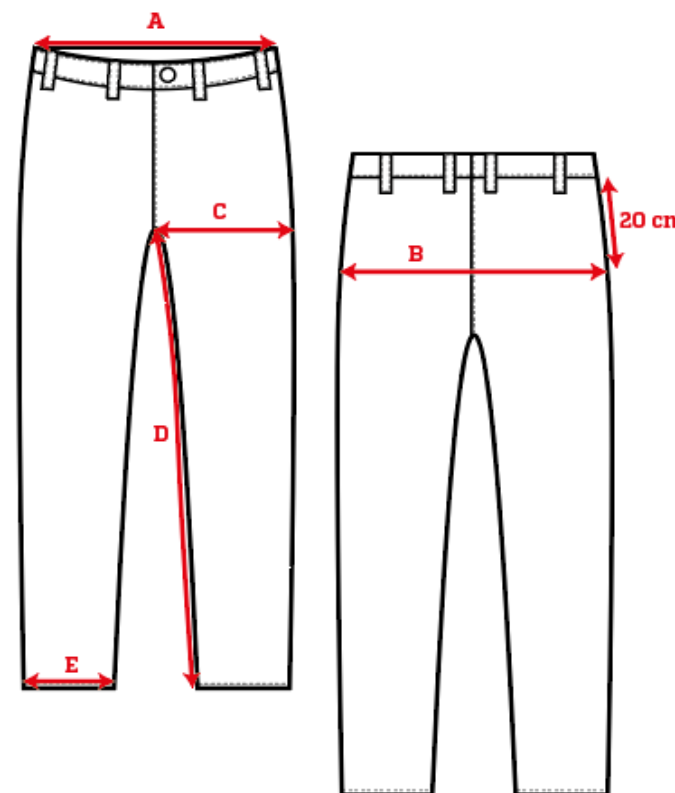
Measure straight across the thigh from the crotch seam to the edge of the outer leg.

D - Inseam Length:

Measure from the crotch seam and follow the inner leg down to the opening.

E - ½ Leg Opening:

Measure straight across the opening, edge to edge.



[See size guide here](#)