

Garment Measurements

		46	48	50	52	54	56	58	60	62	64	66
A	Length Front	86	87	88	89	90	91	92	93	94	95	96
B	Length Back	86	87	88	89	90	91	92	93	94	95	96
C	½ Chest Width	56	58	60	62	64	66	68	70	72	74	76
D	½ Bottom Width	56	58	60	62	64	66	68	70	72	74	76
E	Sleeve Length	84	85	86	87	88	89	89	89	89	89	89

How to measure:

Garment measurements are specified in Centimeters

Make sure the garment is flat and straight and avoid pulling in the garment when measuring.

A - Length Front:

Measure from the highest point on the shoulder, straight down to the bottom of the garment.

B - Length Back:

Measure from the highest point on the shoulder, straight down to the bottom of the garment.

C - ½ Chest Width:

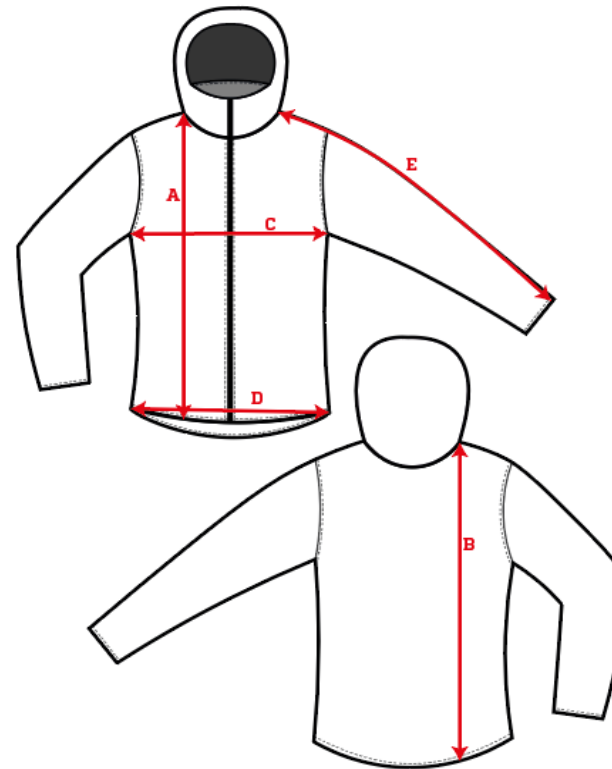
Measure straight across the chest from armpit to armpit.

D - ½ Bottom Width:

Measure straight across the bottom of the garment from edge to edge.

E - Sleeve Length:

Measure from the highest point on the shoulder, and follow the shape of the sleeve down to the opening of sleeve.



[See size guide here](#)