

Garment Measurements

	120	130	140	150	160	170					
A Length Front	52	56	60	64	68	72					
B Length Back	54	58	62	66	70	74					
C ½ Chest Width	44	46	48	50	52	54					
D ½ Bottom Width	43	45	47	49	51	53					
E Sleeve Length	54	59	64	69	74	79					

How to measure:

Garment measurements are specified in Centimeters

Make sure the garment is flat and straight and avoid pulling in the garment when measuring.

A - Length Front:

Measure from the highest point on the shoulder, straight down to the bottom of the garment.

B - Length Back:

Measure from the highest point on the shoulder, straight down to the bottom of the garment.

C - ½ Chest Width:

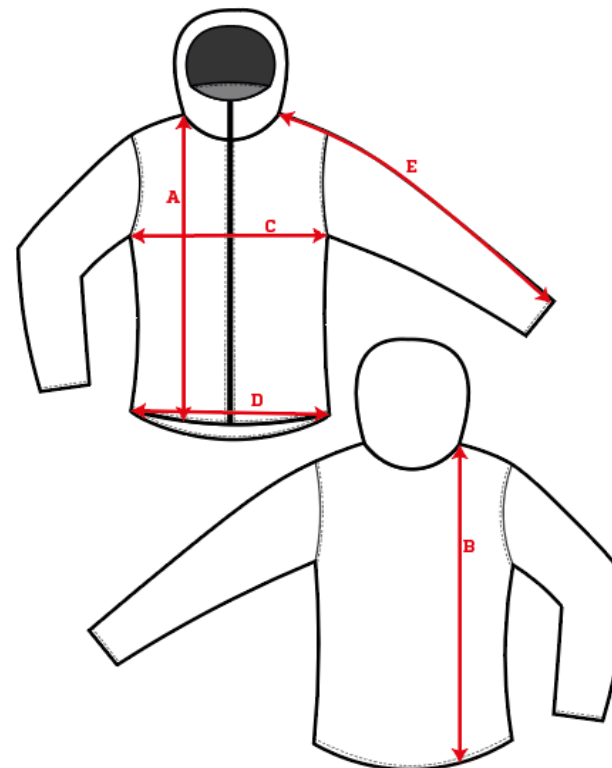
Measure straight across the chest from armpit to armpit.

D - ½ Bottom Width:

Measure straight across the bottom of the garment from edge to edge.

E - Sleeve Length:

Measure from the highest point on the shoulder, and follow the shape of the sleeve down to the opening of sleeve.



[See size guide here](#)