

## Garment Measurements

	46	48	50	52	54	56	58	60	62	64	66
<b>A</b> ½ Waist	38	40	42	44	47	49	52	55			
<b>B</b> ½ Seat	49	51	53	56	59	62	65	67			
<b>C</b> ½ Thigh	30	31	32	33	34	35	36	37			
<b>D</b> Inseam Length	84	84	84	85	85	85	85	86			
<b>E</b> ½ Leg Opening	19	19	20	20	21	21	21	21			

### How to measure:

*Garment measurements are specified in Centimeters*

Make sure the garment is flat and straight and avoid pulling in the garment when measuring.

#### **A - ½ Waist:**

Measure from the highest point of the waistband, straight across to the other side. Edge to edge.

#### **B - ½ Seat:**

Measure 20 cm down from the lower waistband. From that point, straight over to the other side.

#### **C - ½ Thigh:**

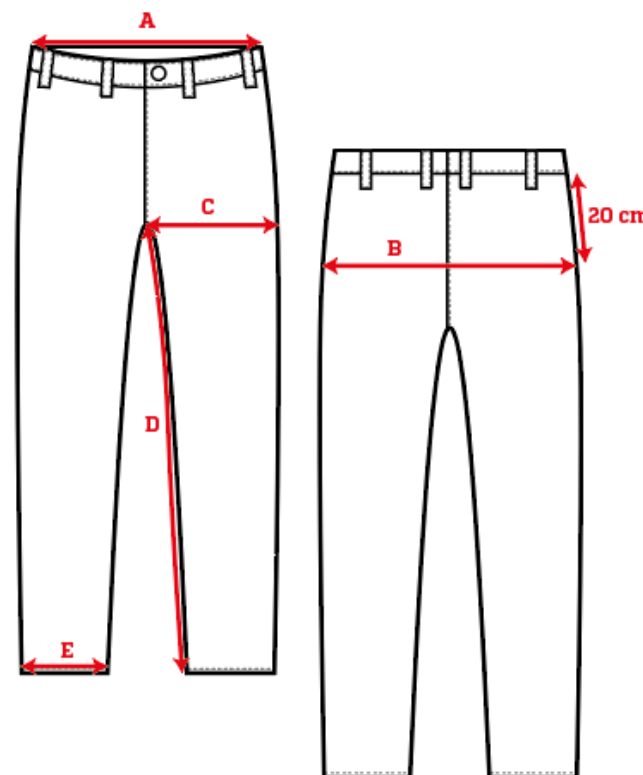
Measure straight across the thigh from the crotch seam to the edge of the outer leg.

#### **D - Inseam Length:**

Measure from the crotch seam and follow the inner leg down to the opening.

#### **E - ½ Leg Opening:**

Measure straight across the opening, edge to edge.



[See size guide here](#)