

## Garment Measurements

	34	36	38	40	42	44	46				
<b>A Length Front</b>	66	68	70	72	74	76					
<b>B Length Back</b>	66	68	70	72	74	76					
<b>C ½ Chest Width</b>	45	48	51	54	57	60					
<b>D ½ Bottom Width</b>	47	50	53	56	59	62					
<b>E Sleeve Length</b>	72	73	75	76	78	79					

### How to measure:

*Garment measurements are specified in Centimeters*

Make sure the garment is flat and straight and avoid pulling in the garment when measuring.

#### **A - Length Front:**

Measure from the highest point on the shoulder, straight down to the bottom of the garment.

#### **B - Length Back:**

Measure from the highest point on the shoulder, straight down to the bottom of the garment.

#### **C - ½ Chest Width:**

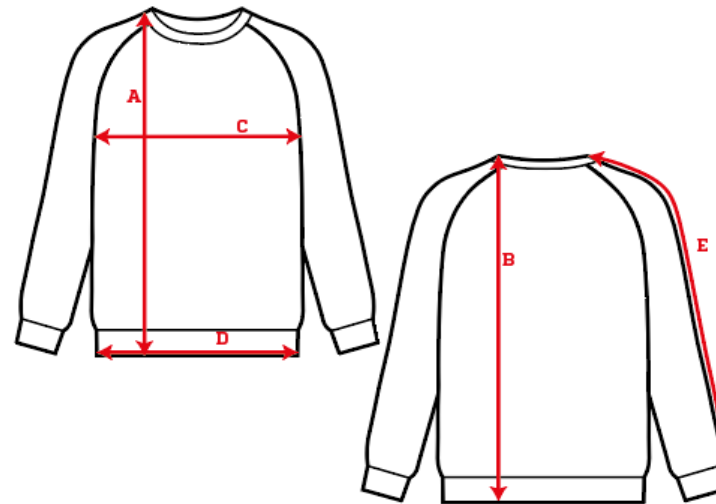
Measure straight across the chest from armpit to armpit.

#### **D - ½ Bottom Width:**

Measure straight across the bottom of the garment from edge to edge.

#### **E - Sleeve Length:**

Measure from the highest point on the shoulder, and follow the shape of the sleeve down to the opening of sleeve.



[See size guide here](#)