

Garment Measurements

	46	48	50	52	54	56	58	60	62	64	66
A ½ Waist	38	40	42	44	47	49	52	55			
B ½ Seat	49	51	53	56	59	62	65	68			
C ½ Thigh	31	32	33	35	36	38	39	41			
D Inseam Length	79	80	81	82	83	84	84	84			
E ½ Leg Opening	21	21	22	22	23	23	23	23			

How to measure:

Garment measurements are specified in Centimeters

Make sure the garment is flat and straight and avoid pulling in the garment when measuring.

A - ½ Waist:

Measure from the highest point of the waistband, straight across to the other side. Edge to edge.

B - ½ Seat:

Measure 20 cm down from the lower waistband. From that point, straight over to the other side.

C - ½ Thigh:

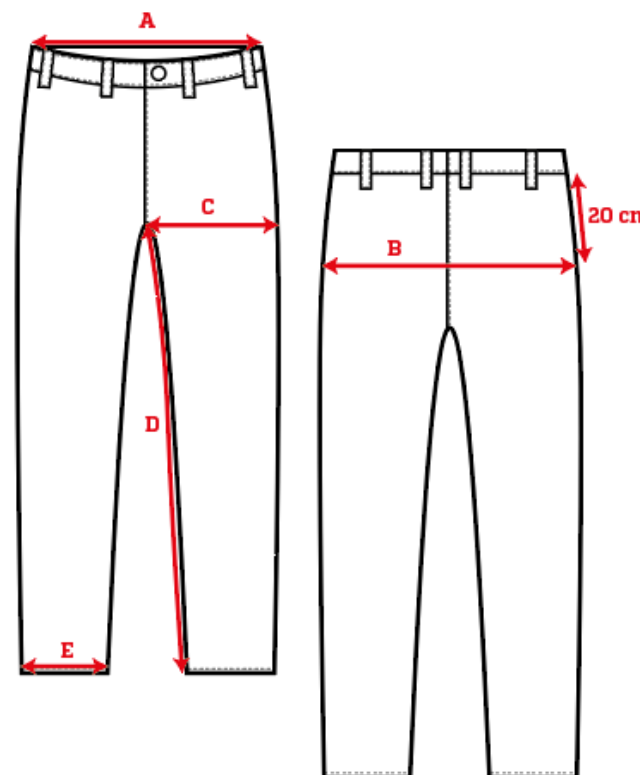
Measure straight across the thigh from the crotch seam to the edge of the outer leg.

D - Inseam Length:

Measure from the crotch seam and follow the inner leg down to the opening.

E - ½ Leg Opening:

Measure straight across the opening, edge to edge.



[See size guide here](#)