

# Garment Measurements

		46	48	50	52	54	56	58	60	62	64	66
A	Length Front	83	84	85	86	87	88	89	90	91	92	93
B	Length Back	86	87	88	89	90	91	92	93	94	95	96
C	½ Chest Width	56	58	60	62	64	66	68	70	72	74	76
D	½ Bottom Width	56	58	60	62	64	66	68	70	72	74	76
E	Sleeve Length	85	86	87	88	89	90	91	92	93	94	95

**How to measure:**

*Garment measurements are specified in Centimeters*

Make sure the garment is flat and straight and avoid pulling in the garment when measuring.

**A - Length Front:**

Measure from the highest point on the shoulder, straight down to the bottom of the garment.

**B - Length Back:**

Measure from the highest point on the shoulder, straight down to the bottom of the garment.

**C - ½ Chest Width:**

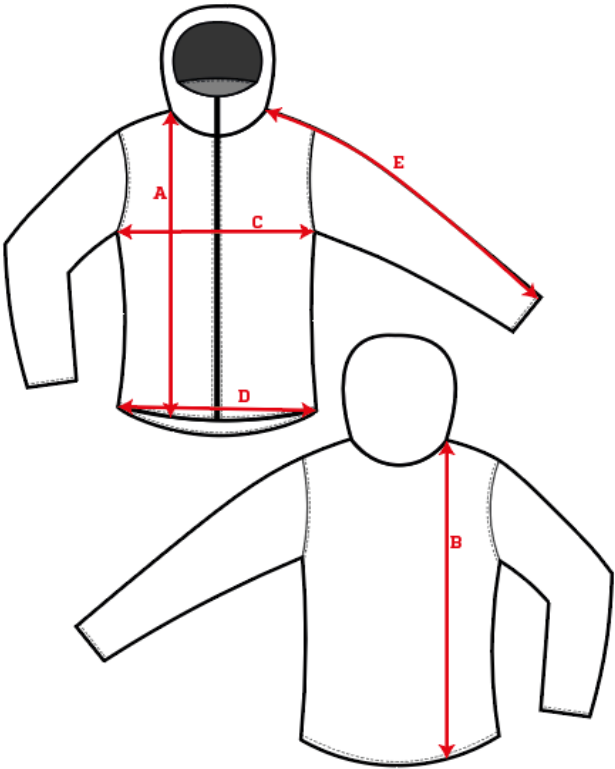
Measure straight across the chest from armpit to armpit.

**D - ½ Bottom Width:**

Measure straight across the bottom of the garment from edge to edge.

**E - Sleeve Length:**

Measure from the highest point on the shoulder, and follow the shape of the sleeve down to the opening of sleeve.



[See size guide here](#)