

Garment Measurements

	34	36	38	40	42	44	46				
A ½ Waist	28	30	32	35	38	41	44				
B ½ Seat	37	39	41	44	47	50	53				
C ½ Thigh	24	25	26	28	29	31	32				
D Inseam Length	74	75	76	77	78	79	80				
E ½ Leg Opening	10	11	11	12	12	13	13				

How to measure:

Garment measurements are specified in Centimeters

Make sure the garment is flat and straight and avoid pulling in the garment when measuring.

A - ½ Waist:

Measure from the highest point of the waistband, straight across to the other side. Edge to edge.

B - ½ Seat:

Measure 20 cm down from the lower waistband. From that point, straight over to the other side.

C - ½ Thigh:

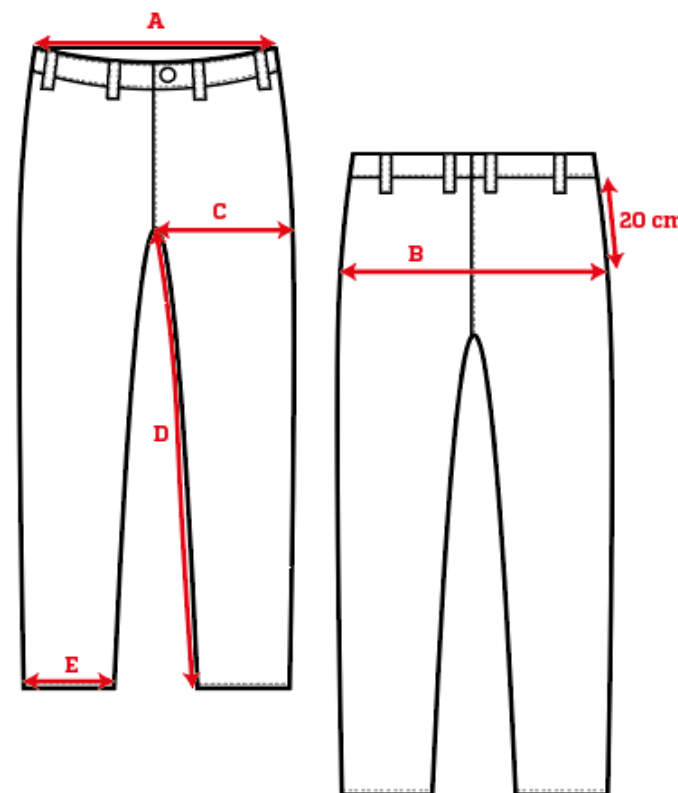
Measure straight across the thigh from the crotch seam to the edge of the outer leg.

D - Inseam Length:

Measure from the crotch seam and follow the inner leg down to the opening.

E - ½ Leg Opening:

Measure straight across the opening, edge to edge.



[See size guide here](#)