

## Garment Measurements

		XS	S	M	L	XL	2XL	3XL	4XL	5XL		
<b>A</b>	<b>Length Front</b>	67	68	69	70	71	72	73				
<b>B</b>	<b>Length Back</b>	70	71	72	73	74	75	76				
<b>C</b>	<b>½ Chest Width</b>	51	53	55	57	59	61	63				
<b>D</b>	<b>½ Bottom Width</b>	47	49	51	53	55	57	59				
<b>E</b>	<b>Sleeve Length</b>	77	78	79	80	81	82	83				

### How to measure:

*Garment measurements are specified in Centimeters*

Make sure the garment is flat and straight and avoid pulling in the garment when measuring.

#### **A - Length Front:**

Measure from the highest point on the shoulder, straight down to the bottom of the garment.

#### **B - Length Back:**

Measure from the highest point on the shoulder, straight down to the bottom of the garment.

#### **C - ½ Chest Width:**

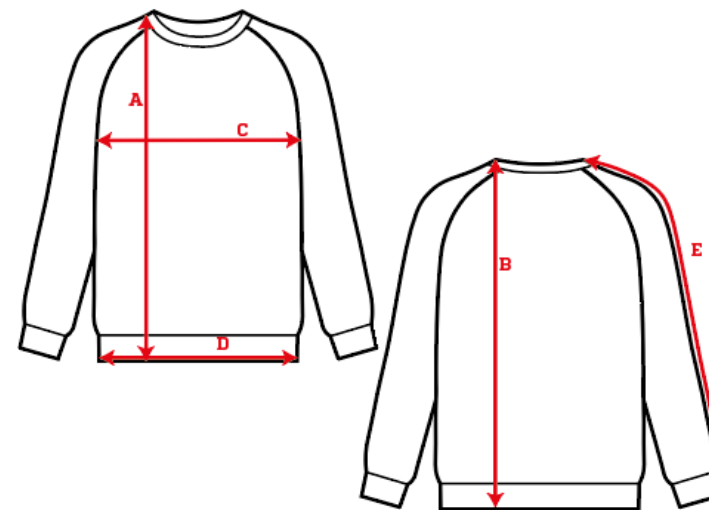
Measure straight across the chest from armpit to armpit.

#### **D - ½ Bottom Width:**

Measure straight across the bottom of the garment from edge to edge.

#### **E - Sleeve Length:**

Measure from the highest point on the shoulder, and follow the shape of the sleeve down to the opening of sleeve.



[See size guide here](#)