

Garment Measurements

		46	48	50	52	54	56	58	60	62	64	66
A	Length Front	72	73	74	75	76	77	78	79			
B	Length Back	76	77	78	79	80	81	82	83			
C	½ Chest Width	49	51	53	55	57	59	61	63			
D	½ Bottom Width	48	50	52	54	56	58	60	62			
E	Sleeve Length	80	81	82	83	84	85	86	87			

How to measure:

Garment measurements are specified in Centimeters

Make sure the garment is flat and straight and avoid pulling in the garment when measuring.

A - Length Front:

Measure from the highest point on the shoulder, straight down to the bottom of the garment.

B - Length Back:

Measure from the highest point on the shoulder, straight down to the bottom of the garment.

C - ½ Chest Width:

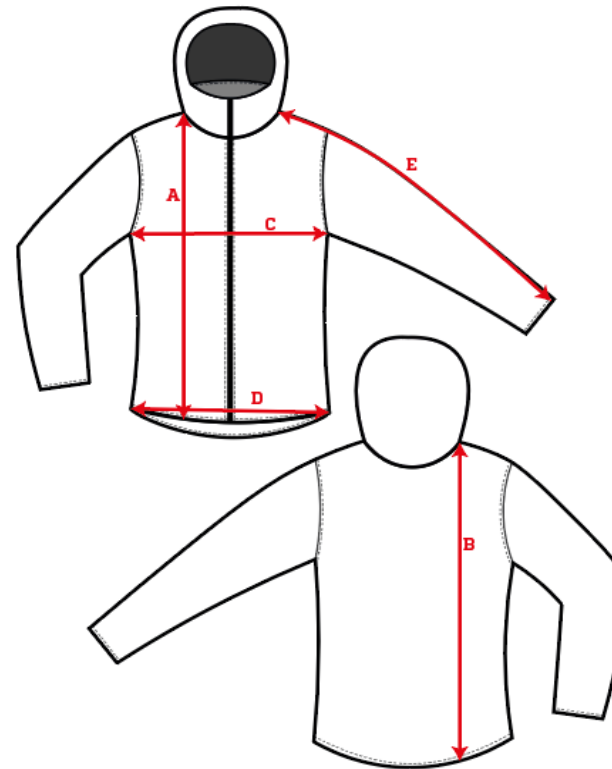
Measure straight across the chest from armpit to armpit.

D - ½ Bottom Width:

Measure straight across the bottom of the garment from edge to edge.

E - Sleeve Length:

Measure from the highest point on the shoulder, and follow the shape of the sleeve down to the opening of sleeve.



[See size guide here](#)