

## Garment Measurements

	46	48	50	52	54	56	58	60	62	64	66
<b>A</b> ½ Waist	37	39	41	43	45	48	51	54			
<b>B</b> ½ Seat	45	47	49	52	55	58	61	63			
<b>C</b> ½ Thigh	27	28	30	32	34	36	38	39			
<b>D</b> Inseam Length	79	80	81	82	83	84	84	84			
<b>E</b> ½ Leg Opening	19	19	20	20	20	20	20	20			

### How to measure:

*Garment measurements are specified in Centimeters*

Make sure the garment is flat and straight and avoid pulling in the garment when measuring.

#### **A - ½ Waist:**

Measure from the highest point of the waistband, straight across to the other side. Edge to edge.

#### **B - ½ Seat:**

Measure 20 cm down from the lower waistband. From that point, straight over to the other side.

#### **C - ½ Thigh:**

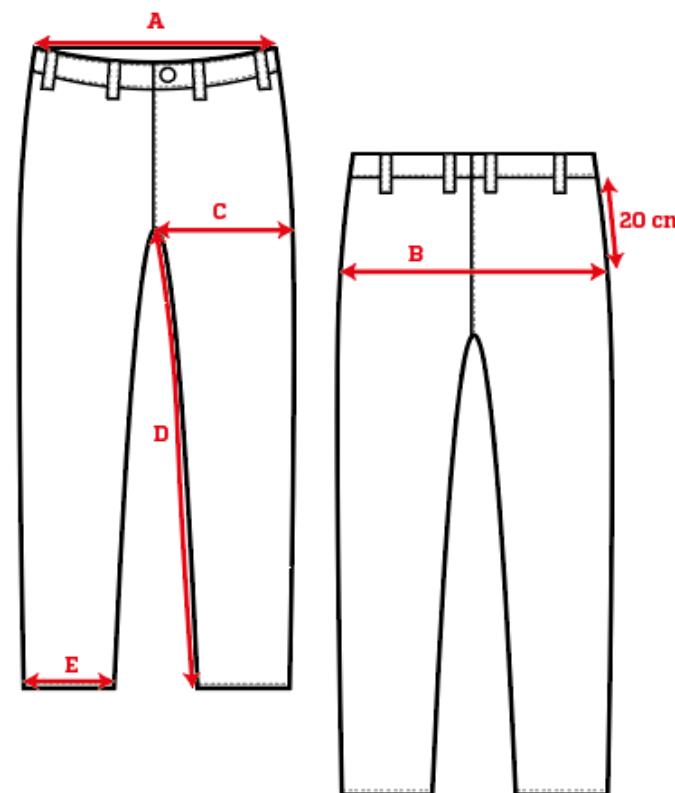
Measure straight across the thigh from the crotch seam to the edge of the outer leg.

#### **D - Inseam Length:**

Measure from the crotch seam and follow the inner leg down to the opening.

#### **E - ½ Leg Opening:**

Measure straight across the opening, edge to edge.



[See size guide here](#)