

## Garment Measurements

		34	36	38	40	42	44	46				
<b>A</b>	<b>Length Front</b>	66	67	68	69	70	71	72				
<b>B</b>	<b>Length Back</b>	74	75	76	77	78	79	80				
<b>C</b>	<b>½ Chest Width</b>	45	48	51	54	57	60	63				
<b>D</b>	<b>½ Bottom Width</b>	48	51	54	57	60	63	66				
<b>E</b>	<b>Sleeve Length</b>	77	79	80	82	82	83	83				

### How to measure:

*Garment measurements are specified in Centimeters*

Make sure the garment is flat and straight and avoid pulling in the garment when measuring.

#### **A - Length Front:**

Measure from the highest point on the shoulder, straight down to the bottom of the garment.

#### **B - Length Back:**

Measure from the highest point on the shoulder, straight down to the bottom of the garment.

#### **C - ½ Chest Width:**

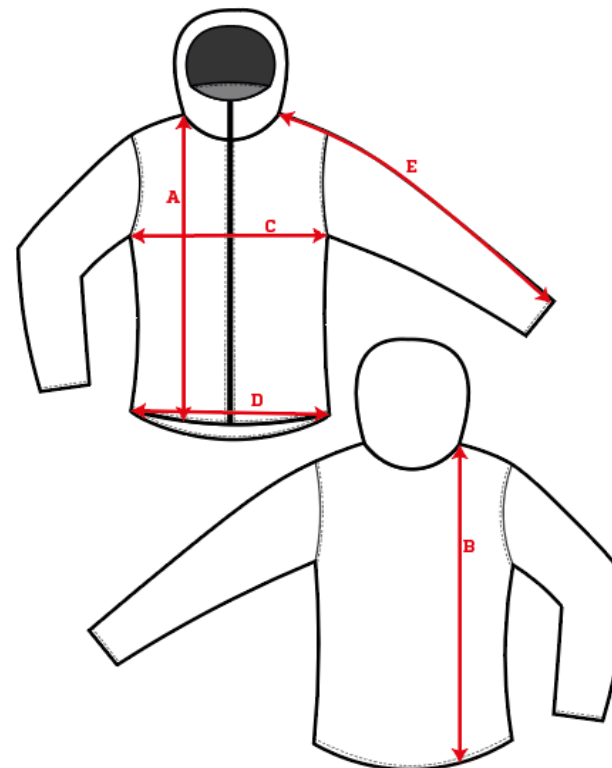
Measure straight across the chest from armpit to armpit.

#### **D - ½ Bottom Width:**

Measure straight across the bottom of the garment from edge to edge.

#### **E - Sleeve Length:**

Measure from the highest point on the shoulder, and follow the shape of the sleeve down to the opening of sleeve.



[See size guide here](#)