

Garment Measurements

	34	36	38	40	42	44	46				
A ½ Waist	32	35	38	41	44	47	50				
B ½ Seat	46	49	52	55	58	61	64				
C ½ Thigh	30	32	34	36	38	40	42				
D Inseam Length	79	80	81	82	82	82	82				
E ½ Leg Opening	19	19	20	20	21	21	22				

How to measure:

Garment measurements are specified in Centimeters

Make sure the garment is flat and straight and avoid pulling in the garment when measuring.

A - ½ Waist:

Measure from the highest point of the waistband, straight across to the other side. Edge to edge.

B - ½ Seat:

Measure 20 cm down from the lower waistband. From that point, straight over to the other side.

C - ½ Thigh:

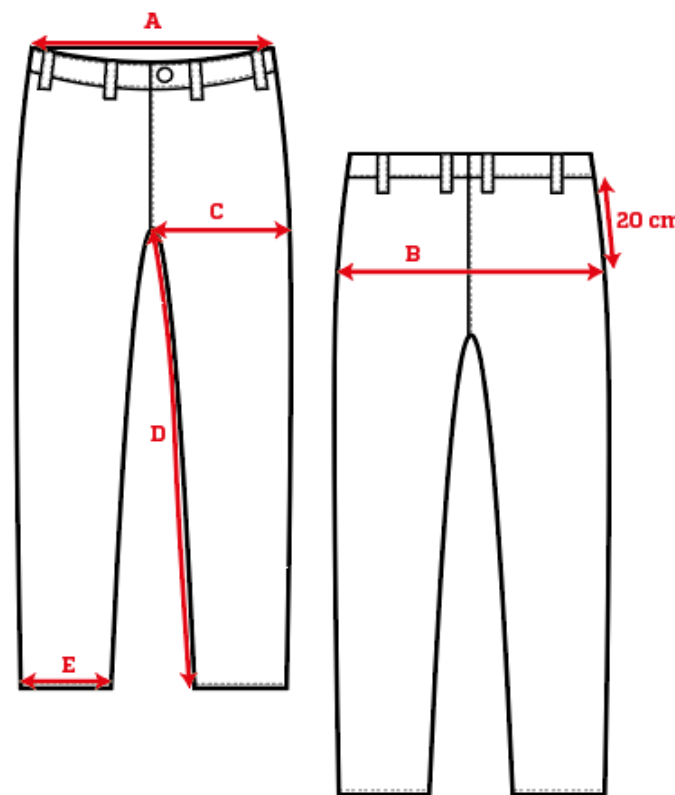
Measure straight across the thigh from the crotch seam to the edge of the outer leg.

D - Inseam Length:

Measure from the crotch seam and follow the inner leg down to the opening.

E - ½ Leg Opening:

Measure straight across the opening, edge to edge.



[See size guide here](#)