

Garment Measurements

	30/34	32/34	34/34	36/36	38/36						
A ½ Waist	40	42	45	48	50						
B ½ Seat	49	52	55	57	60						
C ½ Thigh	30	31	33	35	36						
D Inseam Length	85	85	85	89	89						
E ½ Leg Opening	17	18	19	20	20						

How to measure:

Garment measurements are specified in Centimeters

Make sure the garment is flat and straight and avoid pulling in the garment when measuring.

A - ½ Waist:

Measure from the highest point of the waistband, straight across to the other side. Edge to edge.

B - ½ Seat:

Measure 20 cm down from the lower waistband. From that point, straight over to the other side.

C - ½ Thigh:

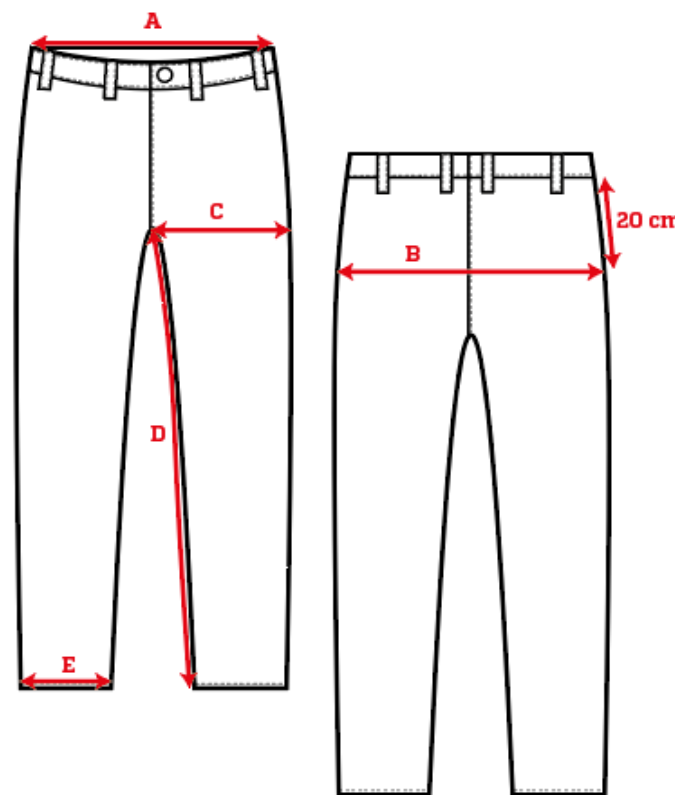
Measure straight across the thigh from the crotch seam to the edge of the outer leg.

D - Inseam Length:

Measure from the crotch seam and follow the inner leg down to the opening.

E - ½ Leg Opening:

Measure straight across the opening, edge to edge.



[See size guide here](#)