

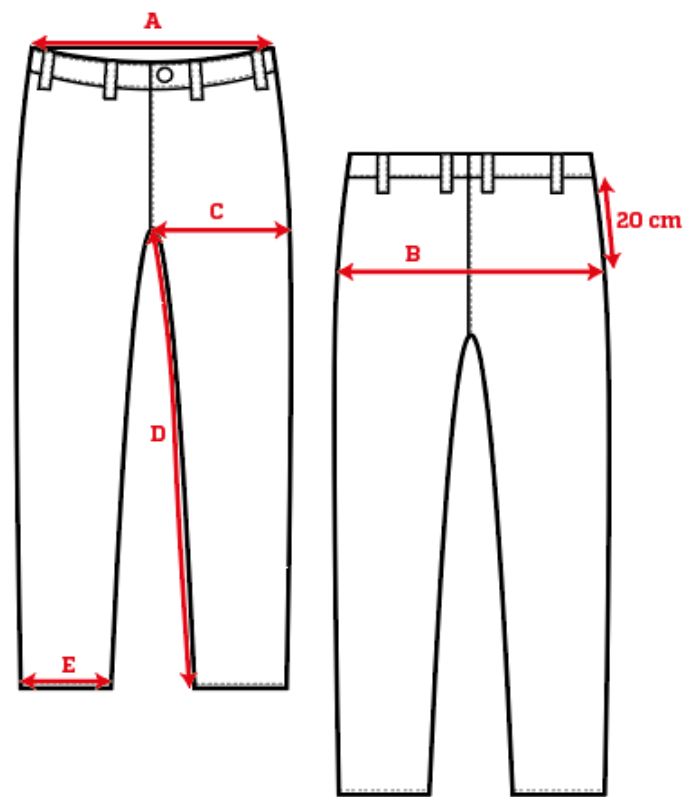
Garment Measurements

		S/M	L/XL	2XL/3XL								
A	½ Waist	33	37	45								
B	½ Seat	40	44	48								
C	½ Thigh	20	22	25								
D	Inseam Length	71	73	75								
E	½ Leg Opening	12	12	13								

How to measure:

Garment measurements are specified in Centimeters

- Make sure the garment is flat and straight and avoid pulling in the garment when measuring.
- A - ½ Waist:**
Measure from the highest point of the waistband, straight across to the other side. Edge to edge.
- B - ½ Seat:**
Measure 20 cm down from the lower waistband. From that point, straight over to the other side.
- C - ½ Thigh:**
Measure straight across the thigh from the crotch seam to the edge of the outer leg.
- D - Inseam Length:**
Measure from the crotch seam and follow the inner leg down to the opening.
- E - ½ Leg Opening:**
Measure straight across the opening, edge to edge.



[See size guide here](#)