

Garment Measurements

	34	36	38	40	42	44	46				
A Length Front	63	64	65	66	67	68	69				
B Length Back	63	64	65	66	67	68	69				
C ½ Chest Width	49	50	52	54	56	58	59				
D ½ Bottom Width	48	49	51	53	55	57	58				
E Sleeve Length	62	63	64	65	66	67	68				

How to measure:

Garment measurements are specified in Centimeters

Make sure the garment is flat and straight and avoid pulling in the garment when measuring.

A - Length Front:

Measure from the highest point on the shoulder, straight down to the bottom of the garment.

B - Length Back:

Measure from the highest point on the shoulder, straight down to the bottom of the garment.

C - ½ Chest Width:

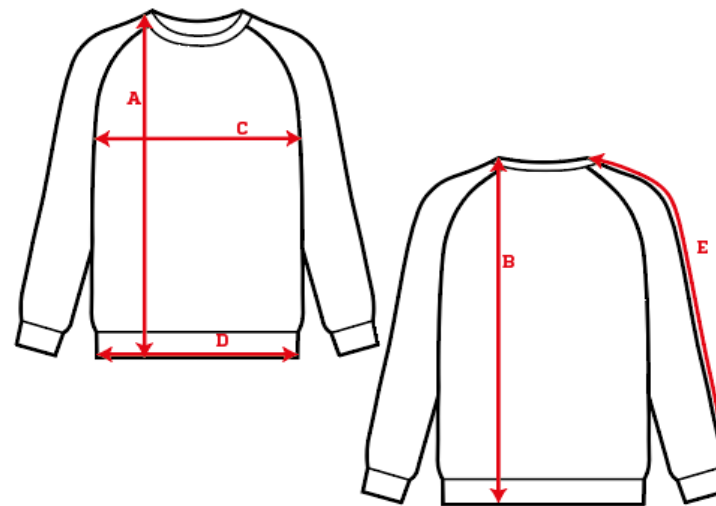
Measure straight across the chest from armpit to armpit.

D - ½ Bottom Width:

Measure straight across the bottom of the garment from edge to edge.

E - Sleeve Length:

Measure from the highest point on the shoulder, and follow the shape of the sleeve down to the opening of sleeve.



[See size guide here](#)