

Garment Measurements

	46	48	50	52	54	56	58	60	62	64	66
A Length Front	76	77	78	79	80	81	82	83	84	85	86
B Length Back	81	82	83	84	85	86	87	88	89	90	91
C ½ Chest Width	54	56	58	60	62	64	66	68	70	72	74
D ½ Bottom Width	53	55	57	59	61	63	65	67	69	71	73
E Sleeve Length	89	90	91	92	93	94	95	96	96	96	96

How to measure:

Garment measurements are specified in Centimeters

Make sure the garment is flat and straight and avoid pulling in the garment when measuring.

A - Length Front:

Measure from the highest point on the shoulder, straight down to the bottom of the garment.

B - Length Back:

Measure from the highest point on the shoulder, straight down to the bottom of the garment.

C - ½ Chest Width:

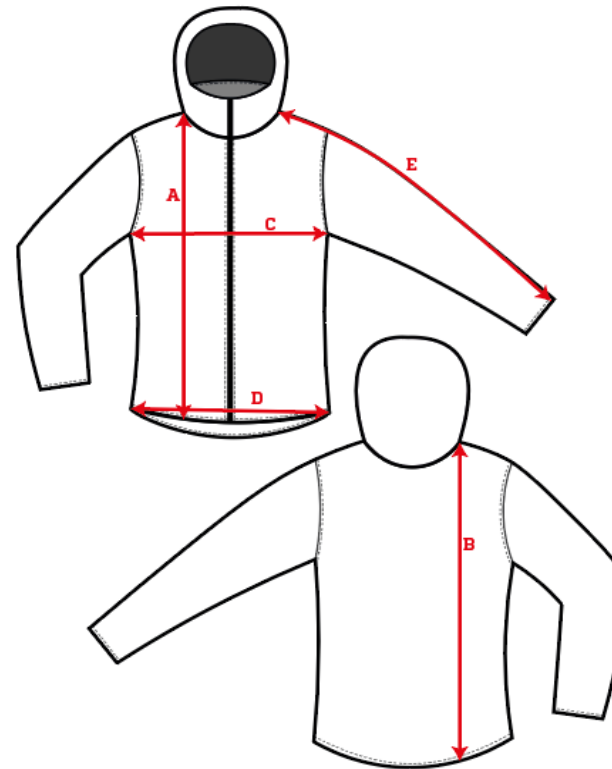
Measure straight across the chest from armpit to armpit.

D - ½ Bottom Width:

Measure straight across the bottom of the garment from edge to edge.

E - Sleeve Length:

Measure from the highest point on the shoulder, and follow the shape of the sleeve down to the opening of sleeve.



[See size guide here](#)