

Garment Measurements

	D96	D100	D104	D108	D112	D116	D120	D124			
A ½ Waist	43	45	47	50	52	55	58				
B ½ Seat	52	54	56	59	62	65	67				
C ½ Thigh	32	33	34	36	37	39	40				
D Inseam Length	76	77	78	79	80	81	81				
E ½ Leg Opening	21	22	22	23	23	23	23				

How to measure:

Garment measurements are specified in Centimeters

Make sure the garment is flat and straight and avoid pulling in the garment when measuring.

A - ½ Waist:

Measure from the highest point of the waistband, straight across to the other side. Edge to edge.

B - ½ Seat:

Measure 20 cm down from the lower waistband. From that point, straight over to the other side.

C - ½ Thigh:

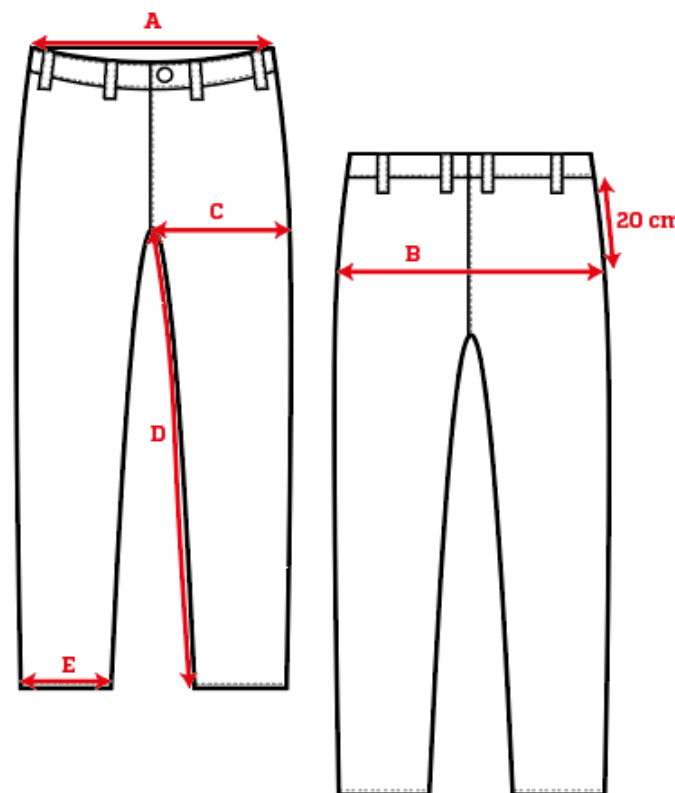
Measure straight across the thigh from the crotch seam to the edge of the outer leg.

D - Inseam Length:

Measure from the crotch seam and follow the inner leg down to the opening.

E - ½ Leg Opening:

Measure straight across the opening, edge to edge.



[See size guide here](#)