

Garment Measurements

		46	48	50	52	54	56	58	60	62	64	66
A	Length Front	80	83	86	89	91	93	95	97	99	101	103
B	Length Back	80	83	86	89	91	93	95	97	99	101	103
C	½ Chest Width	53	56	59	62	65	68	71	74	77	80	83
D	½ Bottom Width	53	56	59	62	65	68	71	74	77	80	83
E	Sleeve Length	85	87	88	90	91	92	93	94	95	96	97

How to measure:

Garment measurements are specified in Centimeters

Make sure the garment is flat and straight and avoid pulling in the garment when measuring.

A - Length Front:

Measure from the highest point on the shoulder, straight down to the bottom of the garment.

B - Length Back:

Measure from the highest point on the shoulder, straight down to the bottom of the garment.

C - ½ Chest Width:

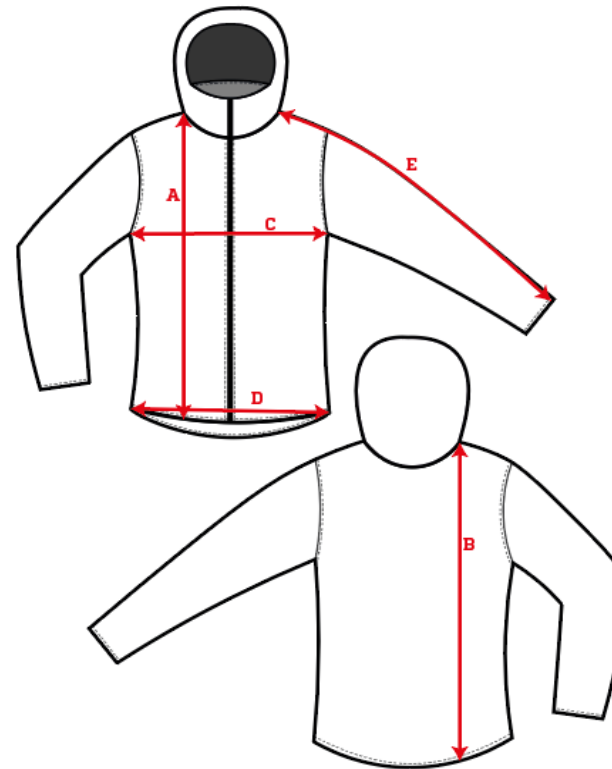
Measure straight across the chest from armpit to armpit.

D - ½ Bottom Width:

Measure straight across the bottom of the garment from edge to edge.

E - Sleeve Length:

Measure from the highest point on the shoulder, and follow the shape of the sleeve down to the opening of sleeve.



[See size guide here](#)