

Garment Measurements

	D96	D100	D104	D108	D112	D116	D120	D124			
A ½ Waist	41	43	45	48	50	53	56				
B ½ Seat	53	55	57	60	63	66	69				
C ½ Thigh	32	33	35	36	38	39	40				
D Inseam Length	74	75	76	77	78	79	79				
E ½ Leg Opening	20	20	20	21	21	21	21				

How to measure:

Garment measurements are specified in Centimeters

Make sure the garment is flat and straight and avoid pulling in the garment when measuring.

A - ½ Waist:

Measure from the highest point of the waistband, straight across to the other side. Edge to edge.

B - ½ Seat:

Measure 20 cm down from the lower waistband. From that point, straight over to the other side.

C - ½ Thigh:

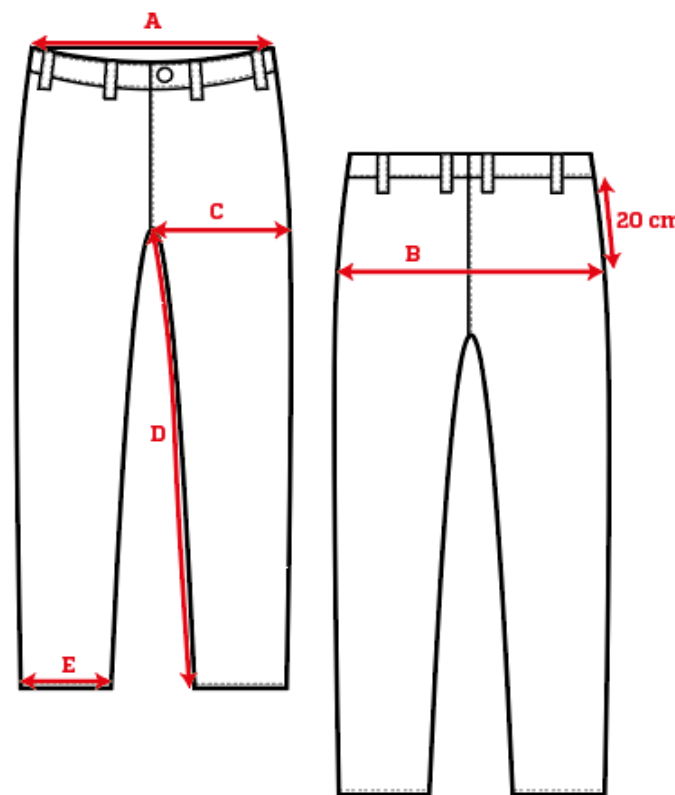
Measure straight across the thigh from the crotch seam to the edge of the outer leg.

D - Inseam Length:

Measure from the crotch seam and follow the inner leg down to the opening.

E - ½ Leg Opening:

Measure straight across the opening, edge to edge.



[See size guide here](#)