

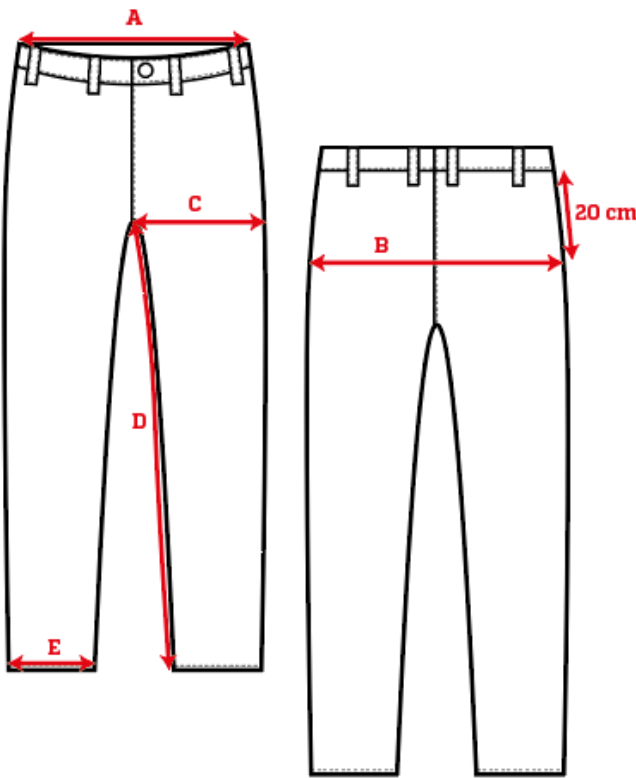
Garment Measurements

		46	48	50	52	54	56	58	60	62	64	66
A	½ Waist	36	38	40	42	45	47	50	53			
B	½ Seat	50	52	54	57	60	63	66	69			
C	½ Thigh	31	32	33	35	36	38	39	41			
D	Inseam Length	77	78	79	80	81	82	83	83			
E	½ Leg Opening	20	20	20	20	21	21	21	21			

How to measure:

Garment measurements are specified in Centimeters

- Make sure the garment is flat and straight and avoid pulling in the garment when measuring.
- A - ½ Waist:**
Measure from the highest point of the waistband, straight across to the other side. Edge to edge.
- B - ½ Seat:**
Measure 20 cm down from the lower waistband. From that point, straight over to the other side.
- C - ½ Thigh:**
Measure straight across the thigh from the crotch seam to the edge of the outer leg.
- D - Inseam Length:**
Measure from the crotch seam and follow the inner leg down to the opening.
- E - ½ Leg Opening:**
Measure straight across the opening, edge to edge.



[See size guide here](#)